

## Steadfast email

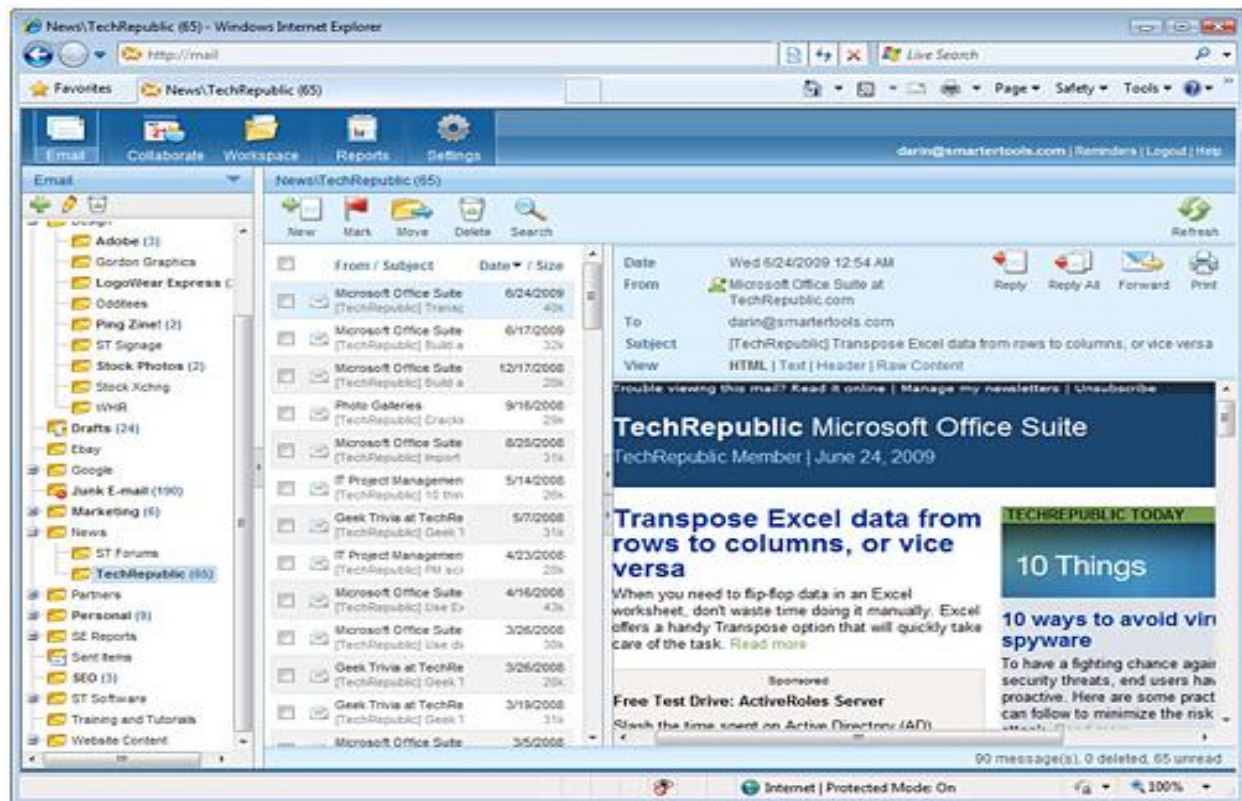
**Steadfast email delivers Exchange-level mail server features at a lower cost. With lower end user requirements, superior stability, and reduced maintenance costs—Steadfast email offers a lower Total Cost of Ownership (TCO) and is a best-in-class Microsoft Exchange alternative for businesses.**

Steadfast email provides businesses with powerful enterprise-level features and collaboration tools, including:

- Smartphone synchronization, **SyncML**, and other Sync technologies
- Integrated **antispam** that delivers comprehensive protection from spam and phishing messages
- Advanced **Outlook synchronization** and collaboration
- Robust **antivirus** that prevents costly downtime
- Events and notifications that help simplify and **automate tasks**
- Advanced **message archiving** compliant with Sarbanes-Oxley and HIPAA regulations
- Leading **Web-based interface**

## Access Webmail, Collaboration Tools, and Sync Mobile Devices from Anywhere

Enjoy increased mobility full collaboration features and synchronize your email, calendars, tasks, and notes with the latest smartphones from anywhere there is an Internet connection. In addition to full Microsoft Outlook and mobile integration, Steadfast email delivers an industry-leading Webmail interface that makes use of drag-and-drop, keyboard shortcuts, pop-up windows, snapping panes, splitters, and tab controls.



### Webmail Interface

Steadfast email and collaboration features are accessible from anywhere there is an Internet connection.



### Outlook and Mobile Email

With POP3, SMTP, and IMAP support, Steadfast email integrates easily with third-party mail clients such as Microsoft Outlook. Steadfast email provides mobile email users with advanced synchronization for Blackberry, iPhone, and Windows Mobile devices.

## Collaboration

### Boost Productivity with a Complete Email Collaboration Server

Steadfast email includes powerful email collaboration server designed to help businesses connect with customers, employees, and partners. Increase productivity, and drive new revenue with enterprise-class collaboration features that most people associate with more expensive mail servers such as Microsoft Exchange, including email, contacts, calendars, tasks, and notes.

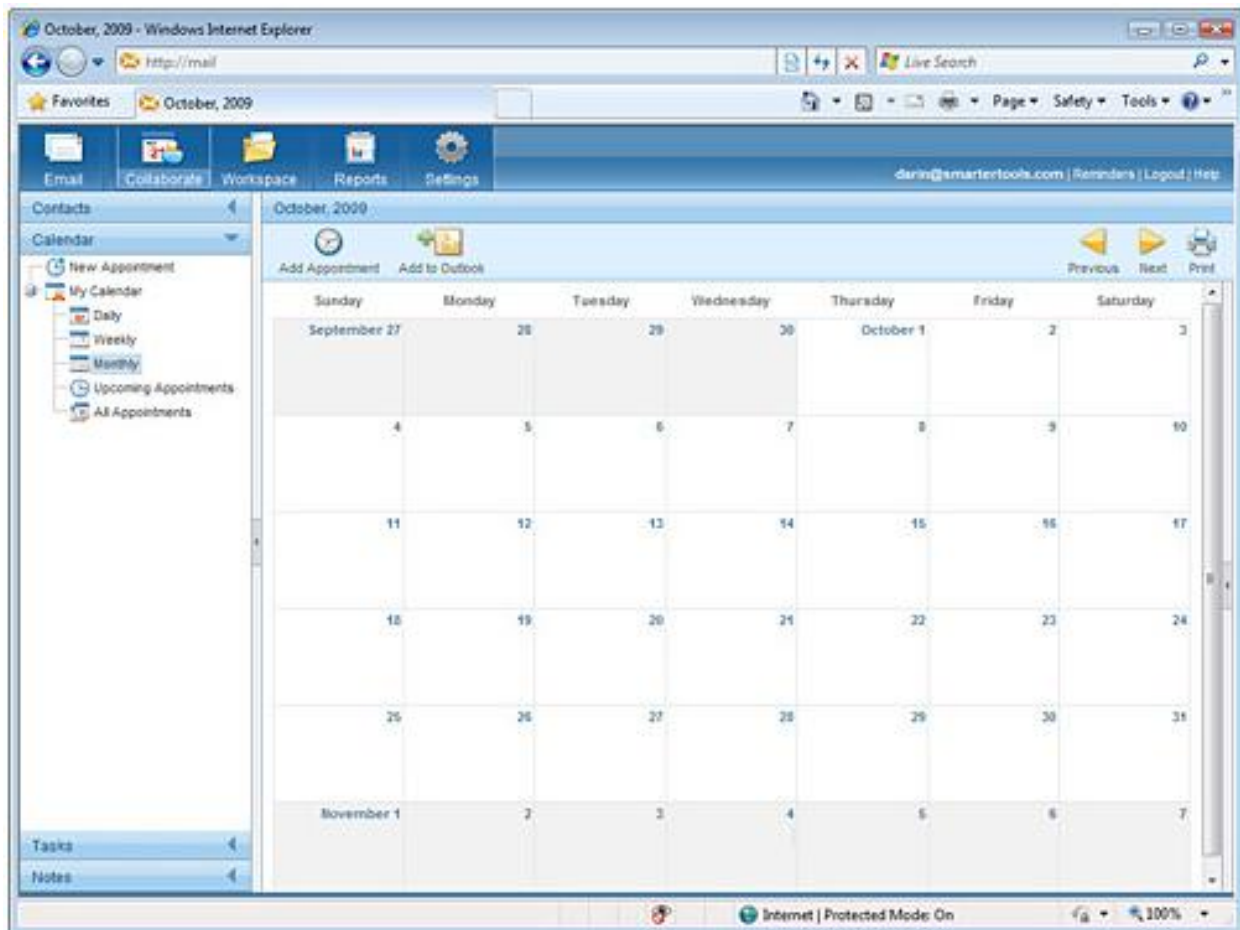
Enjoy increased mobility with complete synchronization support between the Steadfast email Web interface, Microsoft Outlook, and most smartphones from anywhere there is an Internet connection.

## Push to Mobile Devices via Over-the-Air Synchronization

With Steadfast email, it's easy to communicate with employees, co-workers, customers, and partners from most smartphones, such as BlackBerry, iPhone, and Windows Mobile devices. Steadfast email uses multiple data synchronization technologies—including SyncML—to sync emails, contacts, calendars, tasks, and notes.

## Experience Two-way Synchronization with Microsoft Outlook

Steadfast email seamlessly integrates with Microsoft Outlook, giving businesses the ability to fully utilize Microsoft Outlook beyond the capabilities of most mail servers. With complete synchronization support between the Steadfast email Web interface and Microsoft Outlook, changes to folders, calendars, contacts, tasks, and notes are accurate and available from both applications.



## Mail Server Collaboration

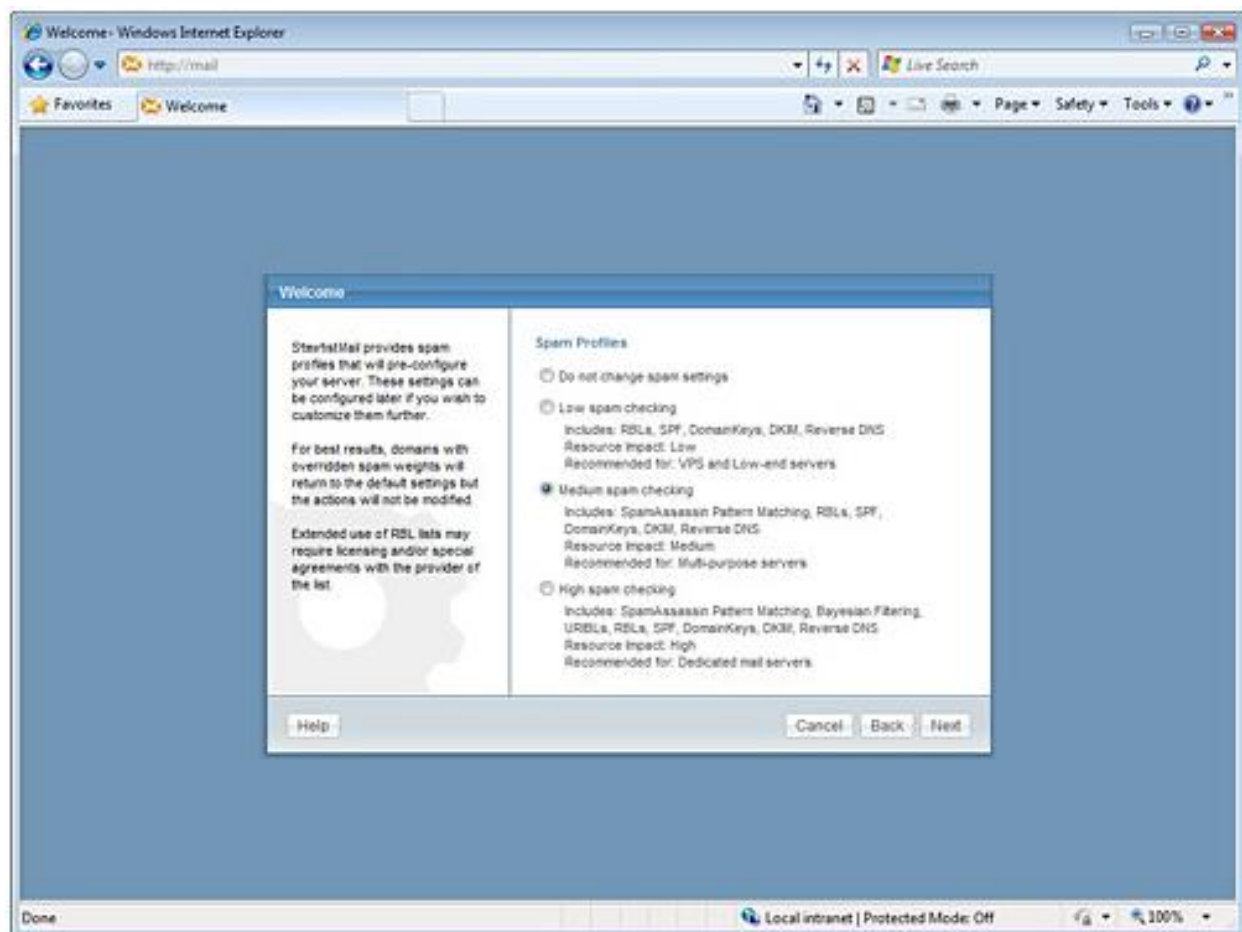
Steadfast email's powerful collaboration tools—shared calendars, contacts, folders, tasks, and notes—help businesses stay connected with employees, customers, and associates at all times.

## Eliminate Spam

Effective spam protection is achieved with Steadfast email's structured, multi-layer spam prevention strategy. Steadfast email's antispam technologies allow for customized levels of protection with flexible configurations on multiple antispam processes, including:

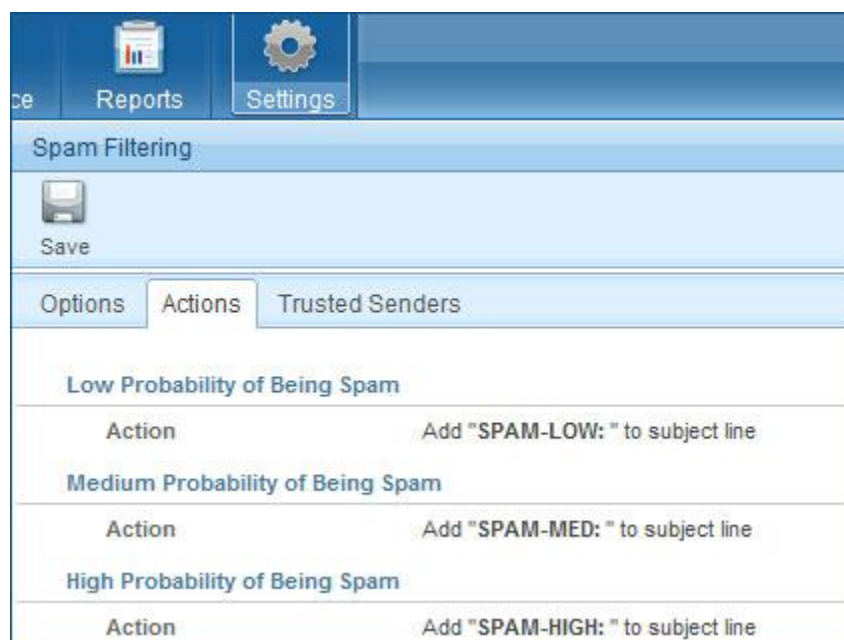
- Greylisting
- Sender Policy Framework (SPF)
- DomainKeys / DKIM
- Custom headers
- Bayesian filtering
- Reverse Domain Name Server (DNS)
- Real-Time Blacklist (RBL)
- Blacklist/Whitelist
- SMTP blocking
- Per-user spam weighting

Steadfast email's spam blocking technologies work together to achieve superior protection with exceptionally low false-positives while safeguarding against additional email threats.



### Spam Configuration Wizard

Configure antispam settings easily with Steadfast email's integrated spam wizard. System administrators can choose from three pre-defined spam protection levels and modify the settings to fit their needs.



### User-level Spam Filtering

With integrated protection from spam, the Steadfast email mail server delivers less junk to your inbox. Users can customize their levels of spam filtering and list trusted senders from the settings area of the Web interface.

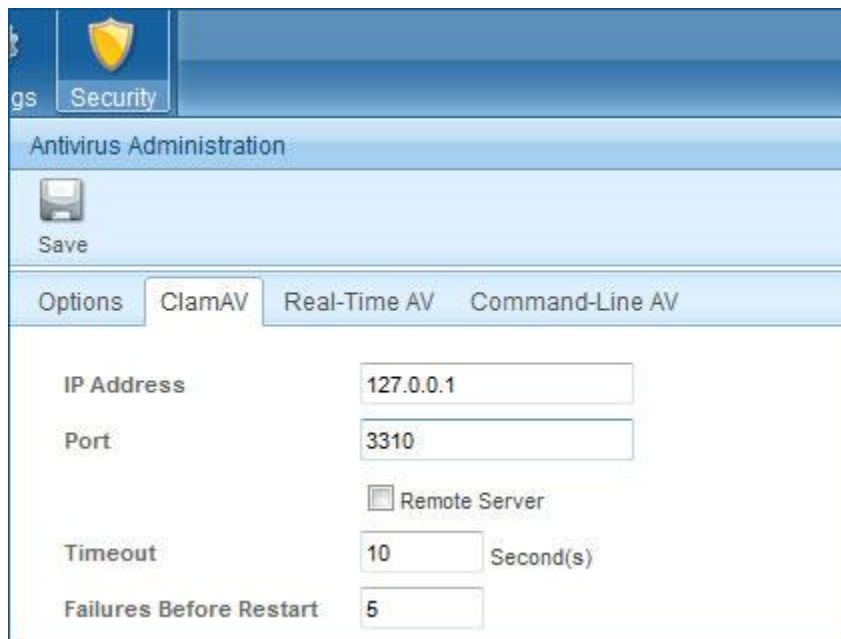
## Ensure Mail Server Security with Multi-layer Protection

Steadfast email includes several security enhancements that prevent the mail server from being compromised, including:

- Support for SSL and TLS encrypted incoming and outgoing connections
- Admin access restriction by IP
- DomainKeys
- Connection Blocking
- Manual and automatic Whitelisting/Blacklisting of IPs
- Optional alternate SMTP port
- Intrusion detection
- Harvest attack prevention
- Denial of service attack prevention
- SMTP authentication
- Malicious script filtering
- Brute detection for webmail

## Protect Users with Built-in Antivirus Software

Steadfast email is equipped with effective and self-updating virus protection measures. Detailed antivirus activity reports are available at the system, domain, and user levels. In addition, the antivirus signature database is updated multiple times a day and contains more than 300,000 signatures, including generic signatures that are able to detect new variants at a high rate of detection.



### Mail Server Antivirus

Steadfast email provides built-in antivirus software to help keep your system secure.

## Administration

### Create and Manage Mailing Lists for Large Email Distributions

Businesses can use Steadfast email's mailing list feature to send mass emails to customers regarding special promotions, product updates, or company news. Create custom templates, manage opt-in email lists, and distribute email communications quickly and easily. Automatic detection and removal of bounced emails for ensure greater efficiency in mailing list maintenance.

Plus, prioritization and throttling features can be requested to manage email delivery so that even the largest mailing list distributions do not interfere with the normal flow of email traffic.

### Advanced Archiving for Management and Compliance

More organizations are requiring advanced, searchable archiving to accommodate industry and regulatory requirements. Steadfast email provides full message archiving at the mailbox, domain, and system level for inbound and outbound email messages and complies with Sarbanes-Oxley (SOX), the Health Industry Portability and Accountability Act (HIPAA), and other regulatory requirements.

## Steadfast Mail Features

### Smartphone

Over-the-Air mobile synchronization  
Microsoft Outlook 2007 (2-way) synchronization  
Microsoft Outlook 2000 and higher synchronization  
Mozilla Thunderbird and Lightning synchronization

### Archive

Message Archiving  
Sorbanes-Oxley compliance

### Webmail

Web 2.0 interface using optimized AJAX  
Snapping panes for improved layout control  
Preview message attachments  
Thumbnails for image file attachments  
Upload attachments in the background  
Webmail personal contacts  
Webmail personal calendars, tasks and notes  
Shared calendars, contacts, tasks and notes  
Events and Notifications  
Webmail reminders system  
Webmail availability of attendees  
Assign actions to events (e.g. command-line, notifications, etc.)  
Folder auto-clean to enforce user quotas  
Spam profiles wizard  
Automatic save as draft  
Spell-check in 15 languages  
Import and export contacts  
Email address auto-complete similar to Microsoft Outlook  
RSS,RDF, and Atom news feed integration  
Multiple signatures support

Multiple identity / SMTP support

Mailing Lists

Bounced detection

Automatic removal of subscribers on bounces

Subscriber custom fields

Common subscriber database for all mailing lists

Toggle auto-generated response to mailing list commands

Create, preview, and save message for distribution

Enhanced mailing list compose with attachments

Unsubscribe links in messages

Merge variables and custom fields into messages (mail merge)

## **Steadfast Hosting and Management**

Email is hosted on redundant enterprise class servers in a Tier 3 high security commercial co-location with restricted access that has state of the art climate control, fire suppression, redundant power supply and back-up power generation, and a triple redundant internet backbone. Email servers are actively managed by professional network engineers and all data is backed up in multiple backup volumes. Anti-virus and spam definitions are updated multiple times a day.